

Your safety is our priority

Coronavirus  
[COVID-19]

# Putting on a face mask

It is important face masks are worn correctly and cover your nose to ensure the best protection



#1

Wash your hands  
or use sanitiser



#2

Bring mask to face  
to make sure it covers  
your nose and mouth



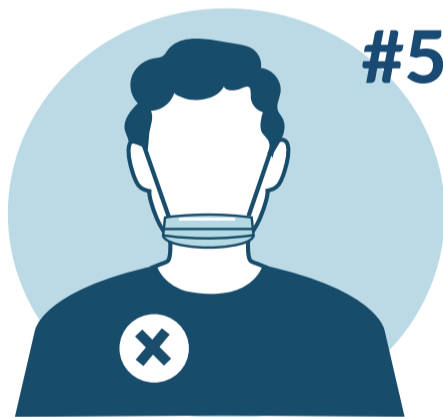
#3

Loop the elastic  
behind your ears



#4

Your mask should  
fit securely around  
your face



#5

Don't wear your mask  
under your chin



#6

Don't touch your  
mask while wearing it

It's important to wash your hands before and after putting on your mask

If you're experiencing COVID-19 symptoms,  
stay home and speak to your doctor about getting tested

For more information visit

[coronavirus.nt.gov.au](https://coronavirus.nt.gov.au)

 NTGovHealth

 **NORTHERN  
TERRITORY**  
GOVERNMENT