

Rapid Antigen Testing

All people entering a Northern Territory remote community with a first dose COVID-19 vaccination rate below 70% from Greater Darwin, Katherine, Alice Springs or interstate, are required to get a Rapid Antigen Test up to 72 hours prior to entering. A list of low vaccinated remote communities can be found at:

coronavirus.nt.gov.au/stay-safe/low-vaccinated-communities

This website is constantly updated as vaccination rates increase, so please check regularly.

Completing your Rapid Antigen Test at home or work

If undertaking a Rapid Antigen Test at home or work, please follow the manufacturers instructions to help you take your test and interpret the results correctly.

Interpreting your results

The Rapid Antigen Testing pad will show your results within 15-20 minutes.

If your result is negative – one line will appear on the testing pad

If your result is positive – two lines will appear on the testing pad

If your result is NEGATIVE (one line):

For proof of your negative test:

- Take a photo of your test, showing the date and time the photo was taken

If your result is POSITIVE (two lines):

- Immediately self-isolate
- Call the NT COVID-19 Hotline on 1800 490 484.

For more information

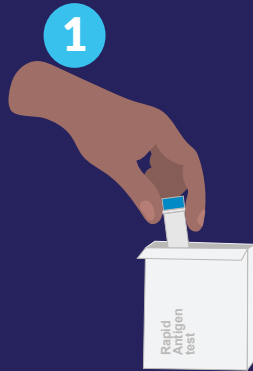
For more information on Rapid Antigen Testing, please contact the COVID-19 Hotline on 1800 490 484.

If you require further assistance to complete your Rapid Antigen Test, please visit one of our NT testing sites in Greater Darwin, Alice Springs and Katherine. More information on accessing these services is available at

coronavirus.nt.gov.au

GUIDE TO PERFORMING A RAPID ANTIGEN TEST

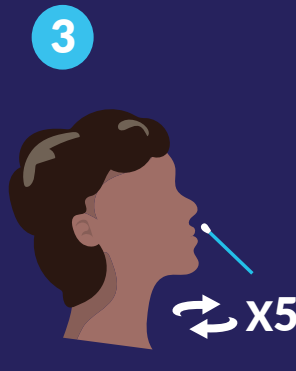
If undertaking a Rapid Antigen Test at home or work, please follow the manufacturers instructions.



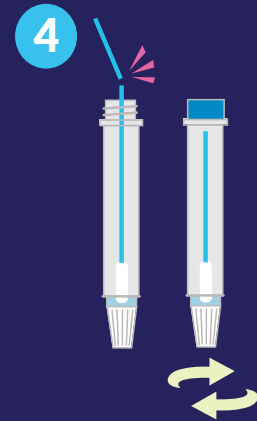
- Open the packet
- Pull out the test and read the instructions carefully



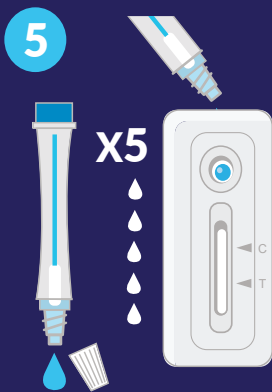
- Add the solution up to line on the testing tube



- Collect the nasal sample by twisting the swab up your nose (until your eyes water)
- Do this 5 times on the left nostril and on the right



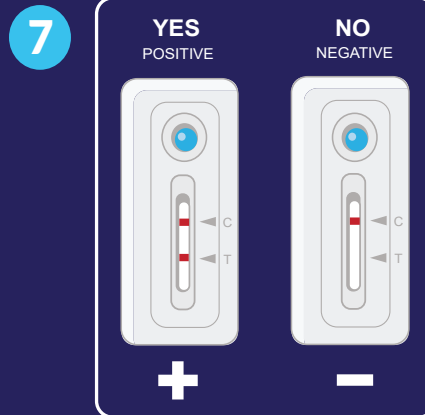
- Place swab into the testing tube
- Snap off the stick and screw on the cap
- Swirl the testing tube gently



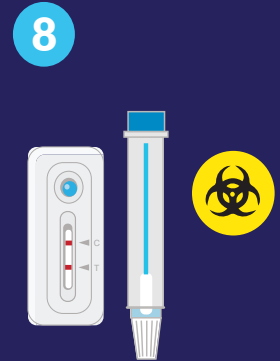
- Remove the bottom lid
- Gently squeeze 5 drops onto the testing pad



- Wait 15 to 20 minutes (no longer than 30mins) for the results



- Two lines means a COVID-19 positive result
- One line means a COVID-19 negative result



- Place the bottom lid back on the testing tube
- Put in the bin

If you have a positive COVID-19 result, call the NT COVID-19 Hotline 1800 490 484